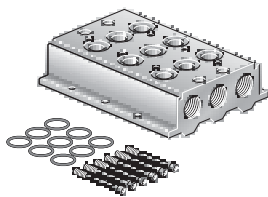


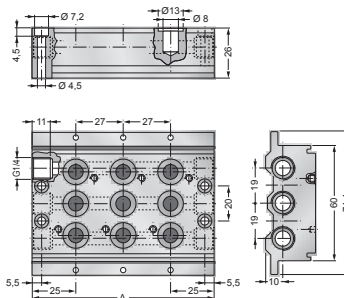


## ME .18

DOUBLE INLET MANIFOLD FOR ASSEMBLING VALVES AND SOLENOID VALVES G1/8  
 BASE A DOPPIO INGRESSO PER ASSEMBLAGGIO VALVOLE ED ELETTROVALVOLE G1/8



- Gaskets and screws for assembling valves on manifold are included.
- Nella confezione sono presenti le guarnizioni e le viti per fissare le valvole alla base.

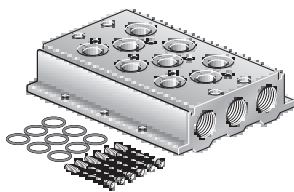


### CODES / CODICI

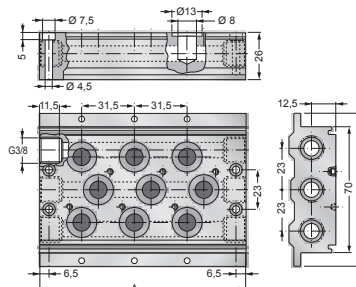
Code Codice	A A	Place Posti
ME 218	77	2
ME 318	104	3
ME 418	131	4
ME 518	158	5
ME 618	185	6
ME 718	212	7
ME 818	239	8
ME 918	266	9
ME 1018	293	10

## ME .14

DOUBLE INLET MANIFOLD FOR ASSEMBLING VALVES AND SOLENOID VALVES G1/4  
 BASE A DOPPIO INGRESSO PER ASSEMBLAGGIO VALVOLE ED ELETTROVALVOLE G1/4



- Gaskets and screws for assembling valves on manifold are included.
- Nella confezione sono presenti le guarnizioni e le viti per fissare le valvole alla base.



### CODES / CODICI

Code Codice	A A	Place Posti
ME 214	91,5	2
ME 314	123	3
ME 414	154,5	4
ME 514	186	5
ME 614	217,5	6
ME 714	249	7
ME 814	280,5	8
ME 914	312	9
ME 1014	343,5	10

(\*) ATEX versions see / Versioni ATEX vedi P. B-116

## SEALS KIT AND ACCESSORIES FOR VALVES AND SOLENOID VALVES G 1/8 AND G 1/4 RICAMBI ED ACCESSORI PER VALVOLE ED ELETTROVALVOLE G 1/8 E G 1/4

### KM 018 (G1/8)

### KM 014 (G1/4)

ASSEMBLING KIT  
 KIT DI ASSEMBLAGGIO

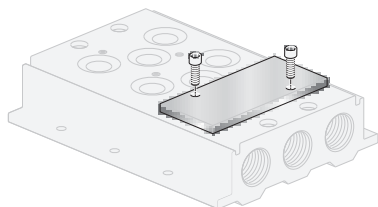


- Subbases are supplied with assembling screws and seals.  
 Kit of screws and seals can be supplied also as spare parts with the code **KM 018** and **KM 014**.
- Le basi sono complete delle viti e delle guarnizioni necessarie per il fissaggio delle valvole.  
 Tuttavia può essere fornito come ricambio il kit **KM 018** per il fissaggio di singole valvole da G1/8 oppure **KM 014** per il fissaggio di singole valvole da G1/4

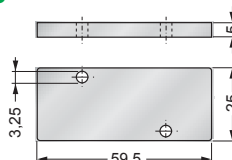
### PCH 018 (G1/8)

### PCH 014 (G1/4)

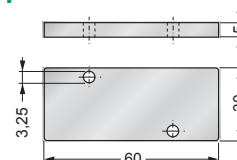
PLUG-FLAT  
 CHIUSURA POSTO INUTILIZZATO



#### PCH 018

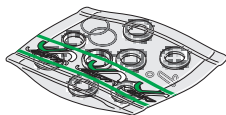


#### PCH 014



## SET.1/4 e 1/2 SG

SEALS KIT  
 KIT GUARNIZIONI DI RICAMBIO



Seals kit code - Codice del kit

- SET 1 1/4 SG:** for G1/4 **mono-stable** valves - per valvole **monostabili** G1/4.
- SET 2 1/4 SG:** for G1/4 **bi-stable** valves - per valvole **bistabili** G1/4
- SET 1 1/2 SG:** for G1/2 **mono-stable** valves - per valvole **monostabili** G1/2.
- SET 2 1/2 SG:** for G1/2 **bi-stable** valves - per valvole **bistabili** G1/2.

Example / Esempio: **E52W1SM14-02400** → **SET 1 1/4 SG**      **E52W2S014-02400** → **SET 2 1/4 SG**



## DIRECT ACTUATED VALVES 3/2 NC G1/8 - ELETTROVALVOLE A COMANDO DIRETTO 3/2 NC G1/8

**MBE - 8 - - - - -**

Number of station valves  
Numero posti  
**2, 4, 6, ..., 16**

**M** with manual control  
con controllo manuale  
(Standard without manual control  
Standard senza controllo manuale)

Coil / Solenoid: (see / vedere P.)

**00000** .. No coil / Senza solenoide  
**01200** .. 12 V DC  
**02400** .. 24 V DC  
**02450** .. 24 V 50/60Hz AC  
**11550** .. 115 V 50/60Hz AC  
**23050** .. 230 V 50/60Hz AC

For versions  
only 5 Watt coil.  
Per versioni **NO**  
solo solenoidi 5 Watt.

**NC** Normally closed  
Normalmente chiusa  
**NO** Normally open  
Normalmente aperta

### TECHNICAL FEATURES

Flow section .....	Ø1,2mm
Nominal Flow .....	80NI/min
Working pressure .....	0-9bar
Environment temperature range .....	-10 °C ÷ +50 °C
Temperature range of medium .....	0 °C ÷ +40 °C
Solenoids .....	Refer to <b>MS</b> series page B-36

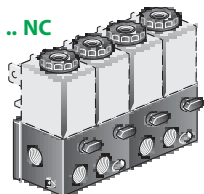
### CARATTERISTICHE TECNICHE

Diametro nominale .....	Ø1,2mm
Portata nominale .....	80NI/min
Pressione esercizio .....	0-9bar
Temperatura ambiente .....	-10 °C ÷ +50 °C
Temperatura fluido .....	0 °C ÷ +40 °C
Solenoidi .....	Vedere <b>MS</b> pag. B-36

## MBE- . 8 - - - - -

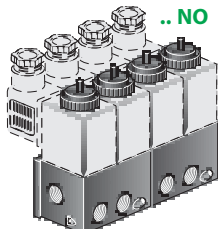
DIRECT ACTING SOLENOID VALVES 3/2 G1/8 - MANIFOLD  
ELETTROVALVOLE A COMANDO DIRETTO 3/2 G1/8 IN BATTERIA

**.. NC**

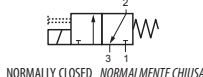


WITH MANUAL OVERRIDE  
CON CONTROLLO MANUALE

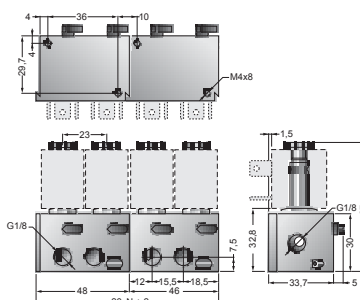
**.. NO**



**MBE-..8-..-..-..-NC**



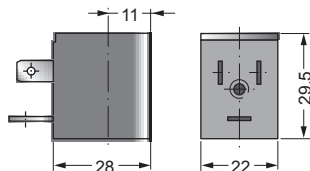
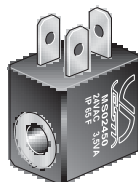
**MBE-..8-..-..-..-NO (#)**



N° = Numbers of base-plate  
Numero di posti della base

## MS .....

COIL  
SOLENOIDE



### CODES / CODICI

Ordination code Codice ordinazione	Voltage Tensione
<b>MS01200</b> .....	12 V DC
<b>MS02400</b> .....	24 V DC
<b>MS02450</b> .....	24 V 50/60Hz AC
<b>MS11550 (*)</b> .....	115 V 50/60Hz AC
<b>MS23050 (*)</b> .....	230 V 50/60Hz AC

(\*) Please see page / Vedi pag. B-37

### TECHNICAL FEATURES

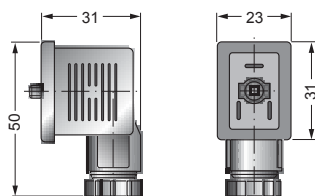
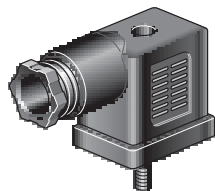
Standard voltage .....	12, 24 V DC 24, 115, 230 V AC (50/60 Hz)
Solenoid characteristics .....	2,5 Watt in DC; 3,5 V A in AC
Tension .....	± 10%
Ambient temperature range .....	-20 °C ÷ +50 °C
Degree of .....	Class F
Expoxy .....	Incapsulated

### CARATTERISTICHE TECNICHE

Tensione standard .....	12, 24 V DC 24, 115, 230 V AC (50/60 Hz)
Prestazioni bobina .....	2,5 Watt in DC; 3,5 V A in AC
Tensione nominale .....	± 10% a bobina calda
Limiti di temperatura ambiente .....	-20 °C ÷ +50 °C
Protezione .....	IP 65 secondo IEC 144 con connettore e guarnizioni montate
Bobina .....	Classe F, Filo rame classe 200 °C
Sovrastampatura .....	Resina epossidica

## CEP-1 .....

SOLENOID CONNECTOR  
CONNETTORE



### CODES / CODICI

Description Descrizione	Code Codice	Tension Tensione
Universal connector Connettore universale	<b>CEP-1</b>	All tension Tutte le tensioni
Connector with led Connettore con led	<b>CEP-1 L 10 / 50</b> <b>CEP-1 L 70 / 250</b>	10/50 V AC / DC 70/250 V AC / DC
Connector with led and varistor Connettore con led e varistore	<b>CEP-1 LV 24</b> <b>CEP-1 LV 110</b> <b>CEP-1 LV 220</b>	24 V AC / DC 115 V AC / DC 230 V AC / DC

### TECHNICAL FEATURES

Wire connection .....	With screwed terminals
Gland thread .....	PG 9
Number of poles .....	2 Poles + earth
Housing colour .....	Black, transparent in the led version.

### CARATTERISTICHE TECNICHE

Connessione cavi .....	Con morsetti a vite
Filettatura passacavo .....	PG 9
N° Poli .....	2 Poli + terra
Colori connettore .....	Nero, trasparente nelle versioni con led.

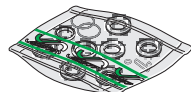
## SET . 1/2 SG

SEALS KIT  
KIT GUARNIZIONI DI RICAMBIO

Seals kit code - Codice del kit

**SET 1 1/2 SG:** for G1/2 **mono-stable** valves - per valvole **monostabili** G1/2.

**SET 2 1/2 SG:** for G1/2 **bi-stable** valves - per valvole **bistabili** G1/2.



Example / Esempio: **E52W15M12-02400** → **SET 1 1/2 SG**

**E52W25012-02400** → **SET 2 1/2 SG**