



DIRECT ACTUATED VALVES 3/2 NC G1/8 - ELETTROVALVOLE A COMANDO DIRETTO 3/2 NC G1/8

MBE - 8 - - - - -

Number of station valves
Numero posti
2, 4, 6, ..., 16

M with manual control
con controllo manuale
(Standard without manual control
Standard senza controllo manuale)

Coil / Solenoid: (see / vedere P.)

00000 .. No coil / Senza solenoide
01200 .. 12 V DC
02400 .. 24 V DC
02450 .. 24 V 50/60Hz AC
11550 .. 115 V 50/60Hz AC
23050 .. 230 V 50/60Hz AC

For versions
only 5 Watt coil.
Per versioni **NO**
solo solenoidi 5 Watt.

NC Normally closed
Normalmente chiusa
NO Normally open
Normalmente aperta

TECHNICAL FEATURES

Flow section	Ø1,2mm
Nominal Flow	80NI/min
Working pressure	0-9bar
Environment temperature range	-10 °C ÷ +50 °C
Temperature range of medium	0 °C ÷ +40 °C
Solenoids	Refer to MS series page B-36

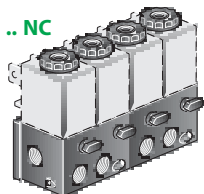
CARATTERISTICHE TECNICHE

Diametro nominale	Ø1,2mm
Portata nominale	80NI/min
Pressione esercizio	0-9bar
Temperatura ambiente	-10 °C ÷ +50 °C
Temperatura fluido	0 °C ÷ +40 °C
Solenoidi	Vedere MS pag. B-36

MBE- . 8 - - - - -

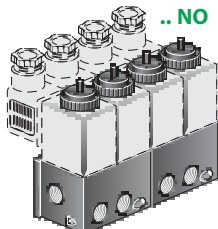
DIRECT ACTING SOLENOID VALVES 3/2 G1/8 - MANIFOLD
ELETTROVALVOLE A COMANDO DIRETTO 3/2 G1/8 IN BATTERIA

.. NC

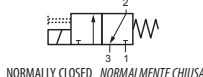


WITH MANUAL OVERRIDE
CON CONTROLLO MANUALE

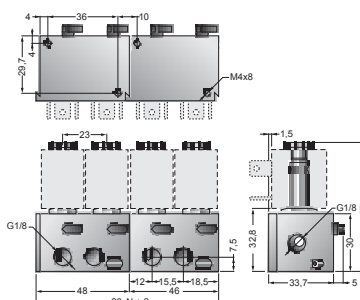
.. NO



MBE-..8-..-.-.-NC



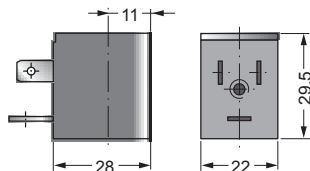
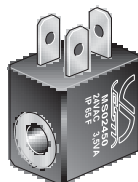
MBE-..8-..-.-.-NO (#)



N° = Numbers of base-plate
Numero di posti della base

MS

COIL
SOLENOIDE



CODES / CODICI

Ordination code Codice ordinazione	Voltage Tensione
MS01200	12 V DC
MS02400	24 V DC
MS02450	24 V 50/60Hz AC
MS11550 (*)	115 V 50/60Hz AC
MS23050 (*)	230 V 50/60Hz AC

(*) Please see page / Vedi pag. B-37

TECHNICAL FEATURES

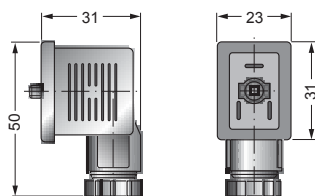
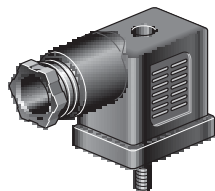
Standard voltage	12, 24 V DC 24, 115, 230 V AC (50/60 Hz)
Solenoid characteristics	2,5 Watt in DC; 3,5 V A in AC
Tension	± 10%
Ambient temperature range	-20 °C ÷ +50 °C
Degree of	Class F
Expoxy	Incapsulated

CARATTERISTICHE TECNICHE

Tensione standard	12, 24 V DC 24, 115, 230 V AC (50/60 Hz)
Prestazioni bobina	2,5 Watt in DC; 3,5 V A in AC
Tensione nominale	± 10% a bobina calda
Limiti di temperatura ambiente	-20 °C ÷ +50 °C
Protezione	IP 65 secondo IEC 144 con connettore e guarnizioni montate
Bobina	Classe F, Filo rame classe 200 °C
Sovrastampatura	Resina epossidica

CEP-1

SOLENOID CONNECTOR
CONNETTORE



CODES / CODICI

Description Descrizione	Code Codice	Tension Tensione
Universal connector Connettore universale	CEP-1	All tension Tutte le tensioni
Connector with led Connettore con led	CEP-1 L 10 / 50 CEP-1 L 70 / 250	10/50 V AC / DC 70/250 V AC / DC
Connector with led and varistor Connettore con led e varistore	CEP-1 LV 24 CEP-1 LV 110 CEP-1 LV 220	24 V AC / DC 115 V AC / DC 230 V AC / DC

TECHNICAL FEATURES

Wire connection	With screwed terminals
Gland thread	PG 9
Number of poles	2 Poles + earth
Housing colour	Black, transparent in the led version.

CARATTERISTICHE TECNICHE

Connessione cavi	Con morsetti a vite
Filettatura passacavo	PG 9
N° Poli	2 Poli + terra
Colori connettore	Nero, trasparente nelle versioni con led.

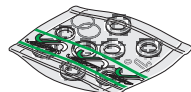
SET . 1/2 SG

SEALS KIT
KIT GUARNIZIONI DI RICAMBIO

Seals kit code - Codice del kit

SET 1 1/2 SG: for G1/2 **mono-stable** valves - per valvole **monostabili** G1/2.

SET 2 1/2 SG: for G1/2 **bi-stable** valves - per valvole **bistabili** G1/2.



Example / Esempio: **E52W15M12-02400** → **SET 1 1/2 SG**

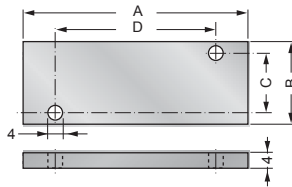
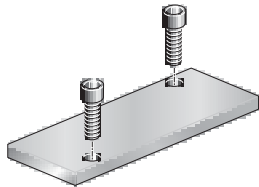
E52W25012-02400 → **SET 2 1/2 SG**



COILS SOLENOID VALVES AND ACCESSORIES - SOLENOIDI PER ELETTROVALVOLE ED ACCESSORI

KPCH01.

PLUG FLAT
CHIUSURA POSTO INUTILIZZATO



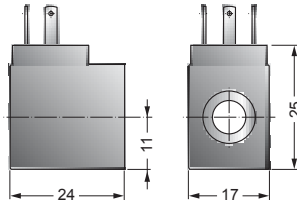
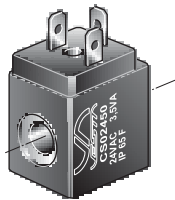
Plug flat includes assembling screws.

La piastrina di chiusura dei posti non utilizzati della base è fornita con le relative viti di fissaggio.

Size Taglia	A	B	C	D	Code Codice
1/8	49	18	13	35,5	KPCH018
1/4	60	22	16,2	50	KPCH014

CS

COILS
SOLENOIDI PER ELETTROVALVOLE



CODES / CODICI

Code ordination Codice ordinazione	Voltage Tensione
CS01200	12 V DC
CS02400	24 V DC
CS02450	24 V 50/60Hz AC
CS11550 (*)	115 V 50/60Hz AC
CS23050 (*)	230 V 50/60Hz AC

(*) Please see page / Vedi pag. B-37

TECHNICAL FEATURES

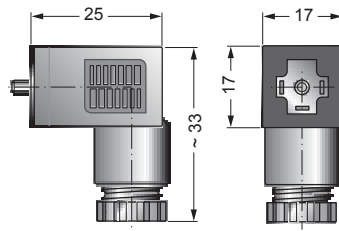
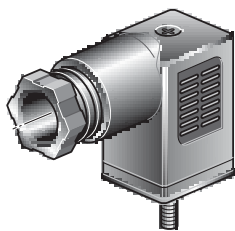
Standard tensions	12, 24, V DC 24, 115, 230 V AC (50/60 Hz)
Other tensions	Contact our commercial department
Duty cycle	100% (continuous)
Power at 20°C	2,4 Watt DC; 3,5 VA AC
Nominal tension	± 10% during normal working
Operating temperature range	-20°C ÷ +50°C
Degree of protection	Fixed plug IP 65 (IEC 144) with connector
Insulation	Class F
Materials	Wire class H - coil moulding glass filled nylon

CARATTERISTICHE TECNICHE

Tensioni standard	12, 24, V DC 24, 115, 230 V AC (50/60 Hz)
Altre tensioni	Interpellare il ns. servizio tecnico commerciale
Funzionamento	100% ED alla potenza ed alla temperatura ambiente indicata
Potenza assorbita a 20°C	2,4 Watt in DC; 3,5 VA in AC
Tensione nominale	± 10% a bobina calda
Limiti di temperatura ambiente	-20°C ÷ +50°C
Protezione	IP 65 secondo IEC 144 con connettore
Bobina	Bobina completa classe F
Materiali	Rivestimento nylon caricato vetro filo di rame classe H

CEP/0

SOLENOID CONNECTORS
CONNETTORI



CODES / CODICI

Description Descrizione	Code Codice	Voltage Tensione
Universal connector Connettore universale	CEP/0	All tension Tutte le tensioni
Connector with led Connettore con led	CEP/0 L 10 / 50 CEP/0 L 70 / 250	10/50 V AC / DC 70/250 V AC / DC
Connector with led and varistor Connettore con led e varistore	CEP/0 LV 24 CEP/0 LV 110 CEP/0 LV 220	24 V AC / DC 115 V AC / DC 230 V AC / DC

TECHNICAL FEATURES

Wire connection	With screwed terminals
Gland thread	PG 7
Number of poles	2 Poles + earth
Housing colour	Black, transparent in the led version.

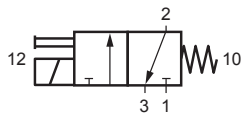
CARATTERISTICHE TECNICHE

Connessione cavi	Con morsetti a vite
Filettatura passacavo	PG 7
N° Poli	2 Poli + terra
Colori connettore	Nero, trasparente nelle versioni con led.

CNOMO PILOT CONTROL SOLENOID VALVE
ELETTROPILOTA CNOMO CON BOBINA **DIN 43650-B**

ELCDC -

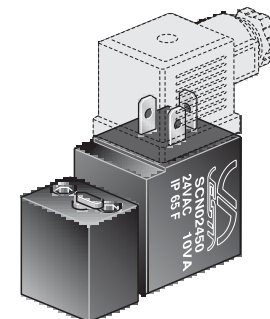
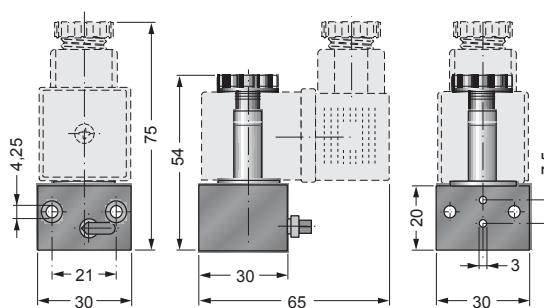
SIMBOL / SIMBOLO



CODES / CODICI

Ordination code Codice ordinazione	Voltage Tensione
ELCDC - 00000	No coil / Senza solenoide
ELCDC - 01200	12 V DC
ELCDC - 02400	24 V DC
ELCDC - 02450	24 V 50/60Hz AC
ELCDC - 11050 (*)	110 V 50/60Hz AC
ELCDC - 22050 (*)	220 V 50/60Hz AC
ELCDC - 23050 (*)	230 V 50/60Hz AC

(*) Please see page / Vedi pag. **B-37**



TECHNICAL FEATURES

Flow section	Ø 1,5 mm
Ambient temperature range	-10 °C ÷ +50 °C
Temperature range of medium	0 °C ÷ +50 °C
Lubrication	Not required
Medium	Filtered air
Operating pressure range	0 ÷ 10 bar
Reference temperature	+20 °C
Reference pressure	6 bar
Nominal air flow	100 NI/min
Coils electrical features	See SCN..... (pag. B-89)

CARATTERISTICHE TECNICHE

Diametro nominale	Ø 1,5 mm
Temperatura ambiente	-10 °C ÷ +50 °C
Temperatura fluido	0 °C ÷ +50 °C
Lubrificazione	Non necessaria
Fluido	Aria filtrata
Pressione d'esercizio	0 ÷ 10 bar
Temperatura nominale	+20 °C
Pressione nominale	6 bar
Portata nominale	100 NI/min
Caratteristiche elettriche bobina	Vedi SCN..... (pag. B-89)

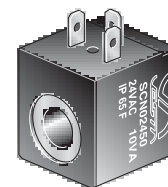
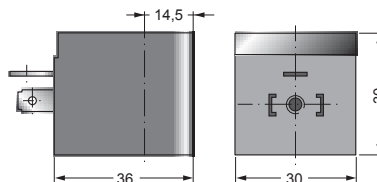
COIL FOR **ELCDC** SOLENOID VALVE
SOLENOIDE PER ELETTROPILOTA

SCN

CODES / CODICI

Ordination code Codice ordinazione	Voltage Tensione
SCN01200	12 V DC
SCN02400	24 V DC
SCN02450	24 V 50/60Hz AC
SCN11050 (*)	110 V 50/60Hz AC
SCN22050 (*)	220 V 50/60Hz AC
SCN23050 (*)	230 V 50/60Hz AC

(*) Please see page / Vedi pag. **B-37**



DIN 43650 - A

TECHNICAL FEATURES

Standard voltage	12, 24 V DC 24, 110, 220, 230 V AC (50/60 Hz)
Solenoid characteristics	2,5 Watt in DC; 3,5 VA in AC
Voltage	± 10% (continuous)
Ambient temperature range	-20 °C ÷ +50 °C
Degree of protection	Fixed plug IP 65 with connector
Pins according	DIN 43650 - B
Insulation	Class F
Exopy	Incapsulated

CARATTERISTICHE TECNICHE

Tensione standard	12, 24 V DC 24, 110, 220, 230 V AC (50/60 Hz)
Prestazioni bobina	2,5 Watt in DC; 3,5 VA in AC
Tensione nominale	± 10% a bobina calda
Limiti di temperatura ambiente	-20 °C ÷ +50 °C
Protezione	IP 65 secondo IEC 144 con connettore e guarnizioni montate
Connessione elettrica	Secondo norma DIN 43650 - B
Bobina	Classe F, Filo rame classe 200 °C
Sovrastampatura	Resina epossidica

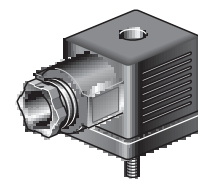
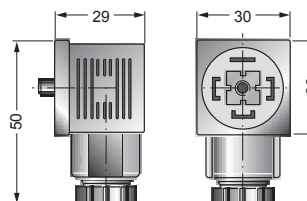
SOLENOID CONNECTOR FOR **SCN** COIL
CONNETTORE PER SOLENOIDE SERIE **SCN**

CEP/2

CODES / CODICI

Description Descrizione	Code Codice	Voltage Tensione
Universal connector Connettore universale	CEP/2	All tension Tutte le tensioni
Connector with led Connettore con led	CEP/2 L 10 / 50 CEP/2 L 70 / 250 (*)	10/50 V AC / DC 70/250 V AC / DC
Connector with led and varistor Connettore con led e varistore	CEP/2 LV 24 CEP/2 LV 110 (*) CEP/2 LV 220 (*)	24 V AC / DC 110 V AC / DC 220 V AC / DC

(*) Please see page / Vedi pag. **B-37**



TECHNICAL FEATURES

Wire connection	With screwed terminals
Gland thread	PG 11
Number of poles	2 Poles + earth
Housing colour	Black, transparent in the led version

CARATTERISTICHE TECNICHE

Connessione cavi	Con morsetti a vite
Filettatura passacavo	PG 11
N° Poli	2 Poli + terra
Colori connettore	Nero, trasparente nella versione con led.